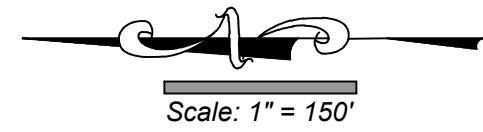
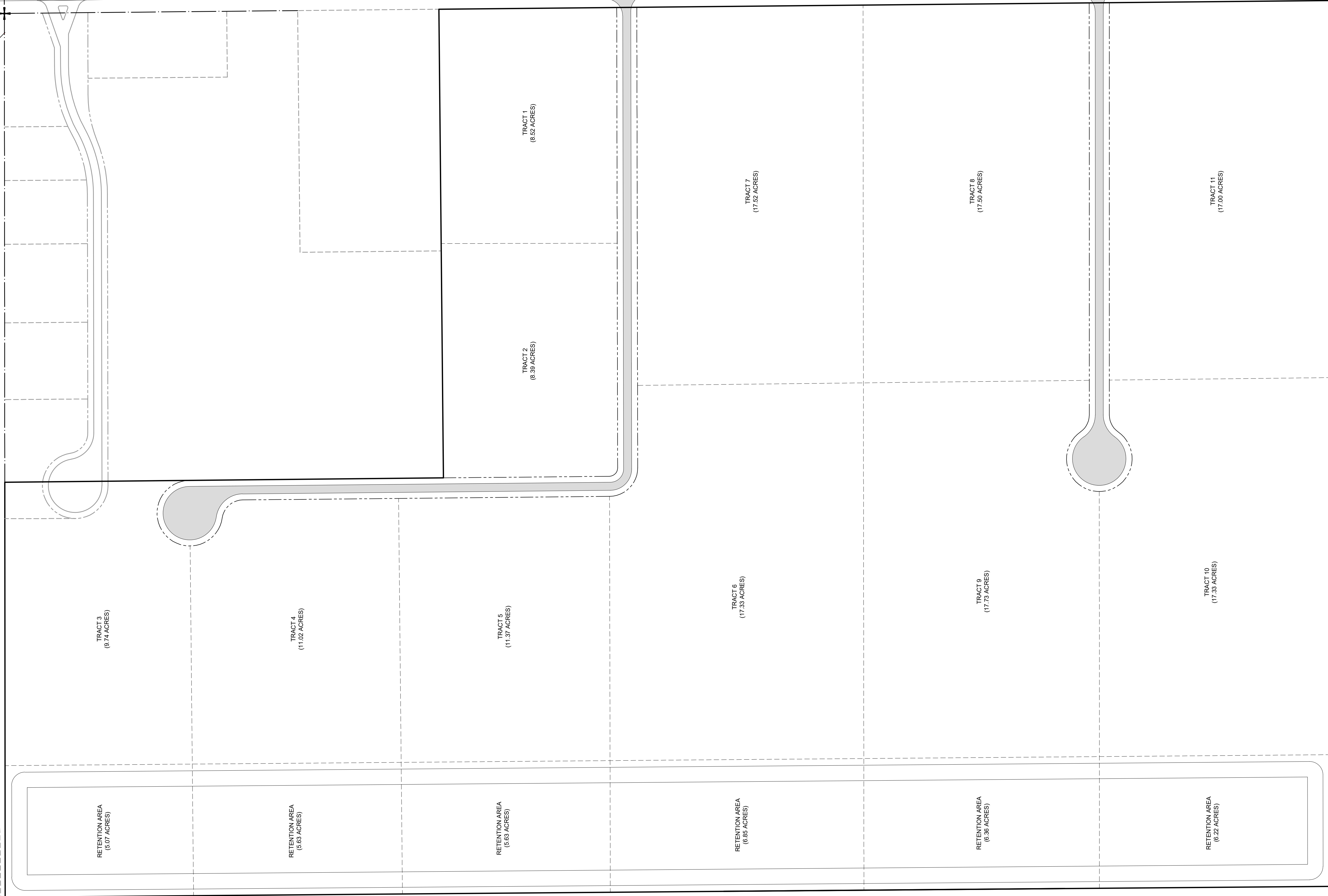


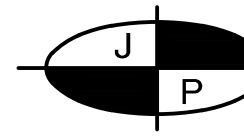
C/L RW COUNTY ROAD NO. 835 (EVERCANE ROAD)

SFCD CANAL NO. 3 (BOUNDARY CONDITION)



REVISIONS	DATE	BY

SURVEYED DATE: 01-21-08		FIELD BOOKS AND PAGES: BOOK 712, PGS. 3 & 4	
DRAWING DATE: 2017-01-23	DRAWING SCALE: 1" = 150'		
DESIGNED BY: N/A	DRAWN BY: N.J.N.	CHECKED BY: N/A	


JOHNSON - PREWITT & ASSOCIATES, INC.
 ENGINEERS • PLANNERS • LAND SURVEYORS
 STATE AUTHORIZATION NUMBER LB1042, EB1042
 P.O. BOX 1029 850 WEST VENTURA AVENUE CLEWISTON, FLORIDA PH: (863) 983-9188 FAX: (863) 983-9854
www.johnsonprewitt.com

"WEEKLEY BROTHERS INDUSTRIAL PARK"
CONCEPTUAL PARCEL PLAN
 IN SECTION 35, T. 43 S., R. 34 E.,
 HENDRY COUNTY, FLORIDA

SHEET
1